



Ethernet/IP R51C1-EP M241



2019-10-11

2019-12-19

2019 12 19

2019 12 19

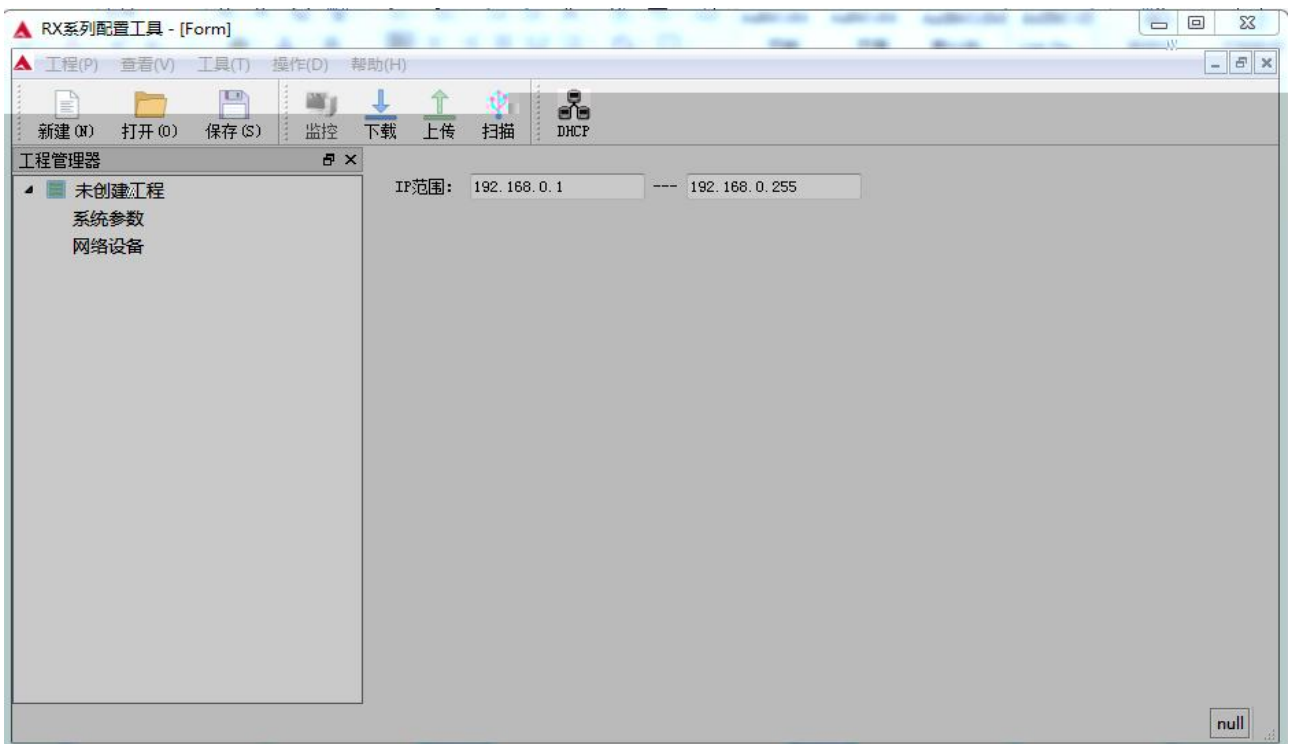
M241 PLC Ethernet/IP IO

M241PLC Ethernet/IP IO SoMachine Logic Builder - V4.3
IO .eds IO

- SoMachine Logic Builder - V4.3
- IO R51C1_EP.eds

1. M241PLC IO
2. PLC Ethernet IO

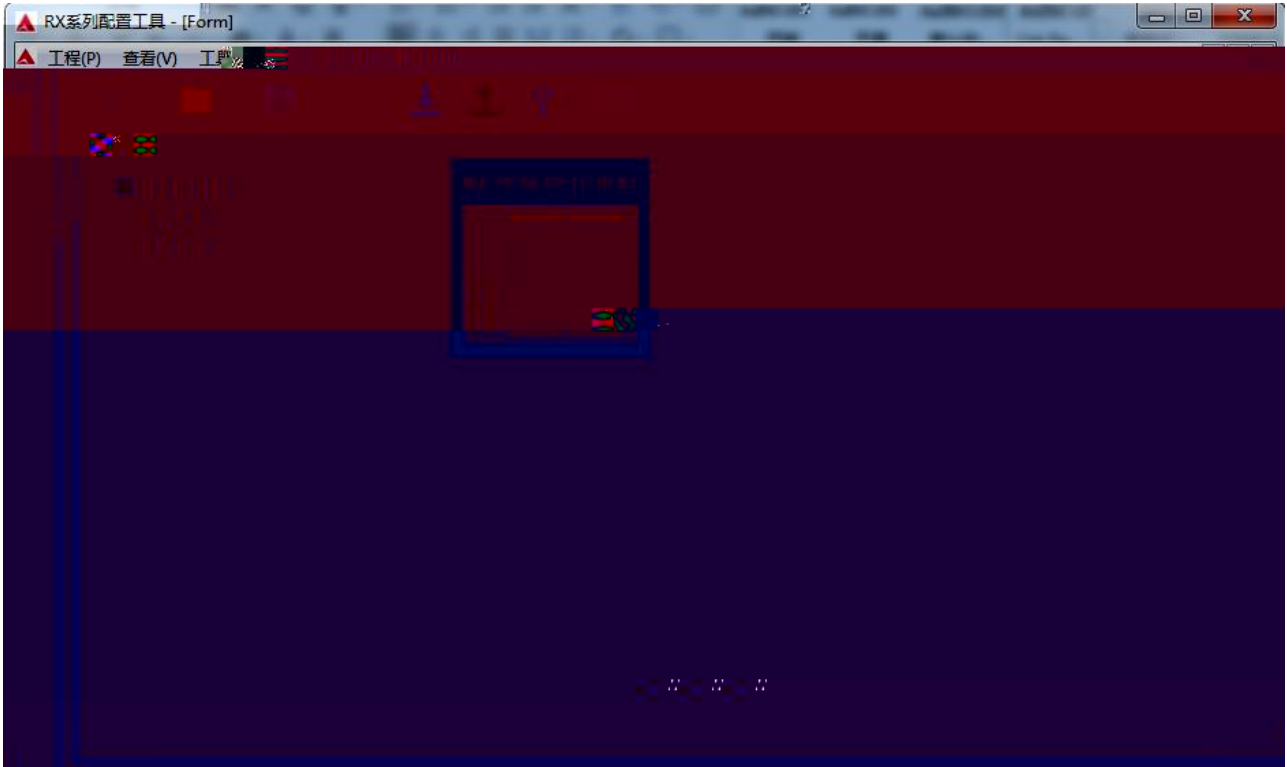
1. RxTool IP
IP 192.168.0.2



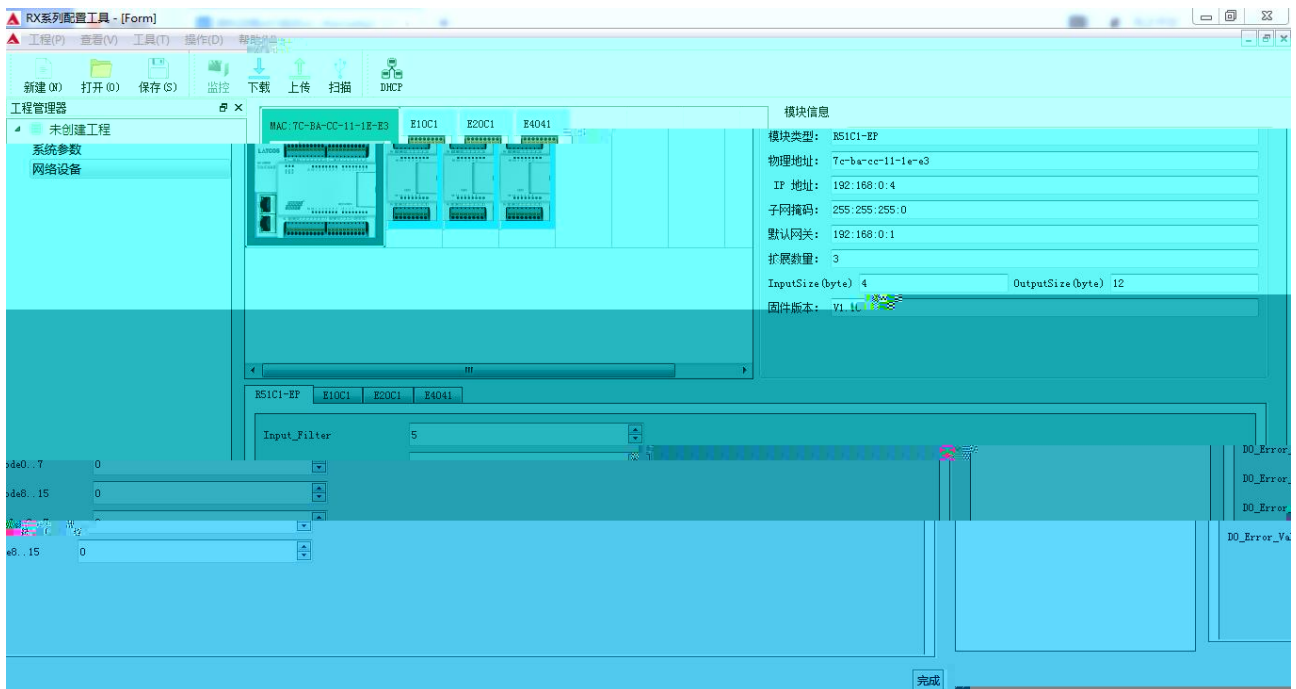


1.1

IP



1.2



1.3

[InputSize OutputSize

IO]

模块信息

模块类型: R51C1-EP

物理地址: 7c-ba-cc-11-1e-e3

IP 地址: 192.168.0.4

子网掩码: 255.255.255.0

默认网关: 192.168.0.1

扩展数量: 3

InputSize (byte) 4 OutputSize (byte) 12

固件版本: V1.10

1.4 IO

R51C1-EP E10C1 E20C1 E4041

Input_Filter 5

Error_Mode0..7 0

Error_Mode8..15 0

Error_Value0..7 0

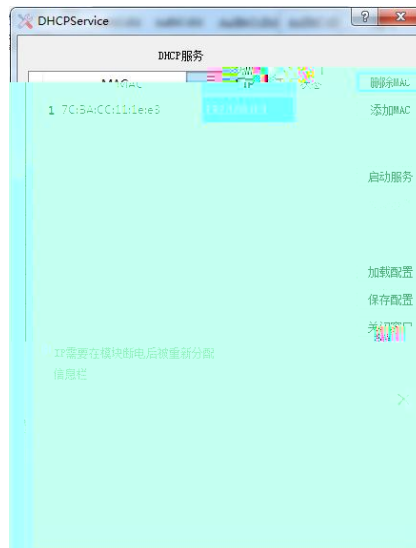
Error_Value8..15 0

1.5 IP



DHCPService 添加MAC DHCP

启动服务 5 IP



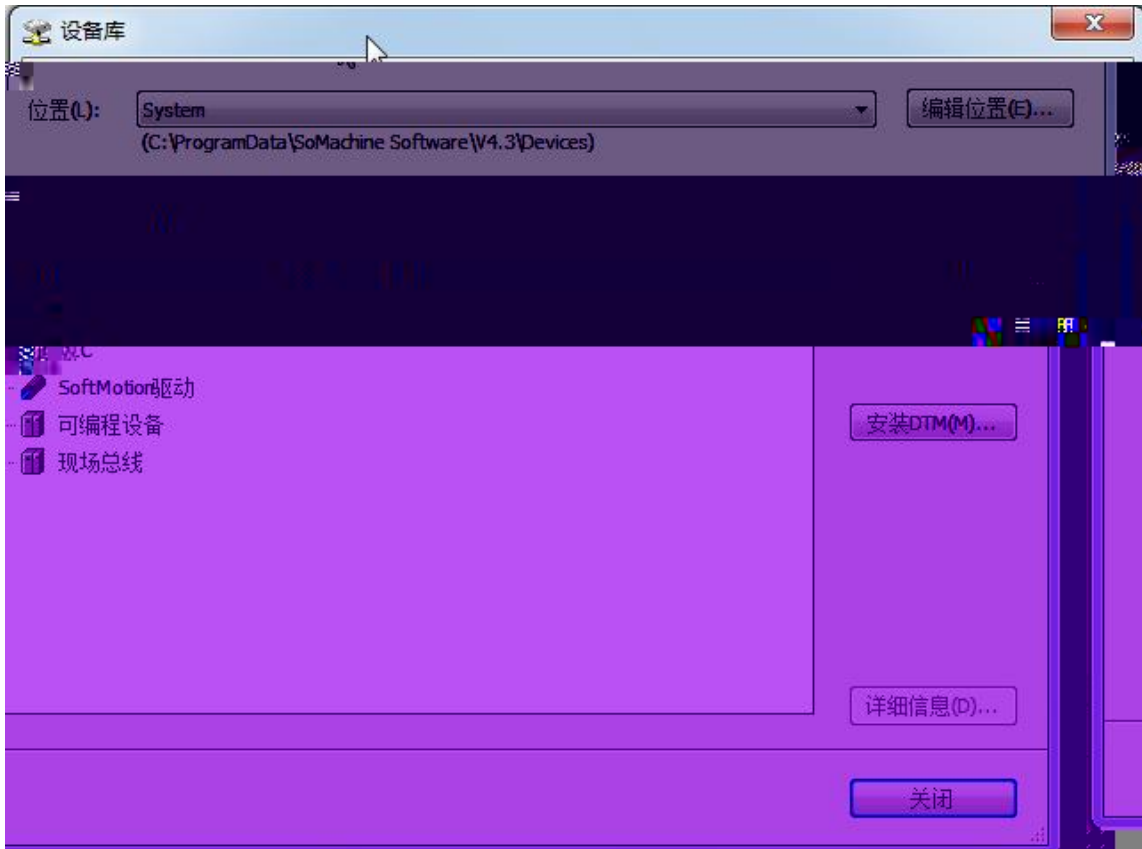
2. SoMachine



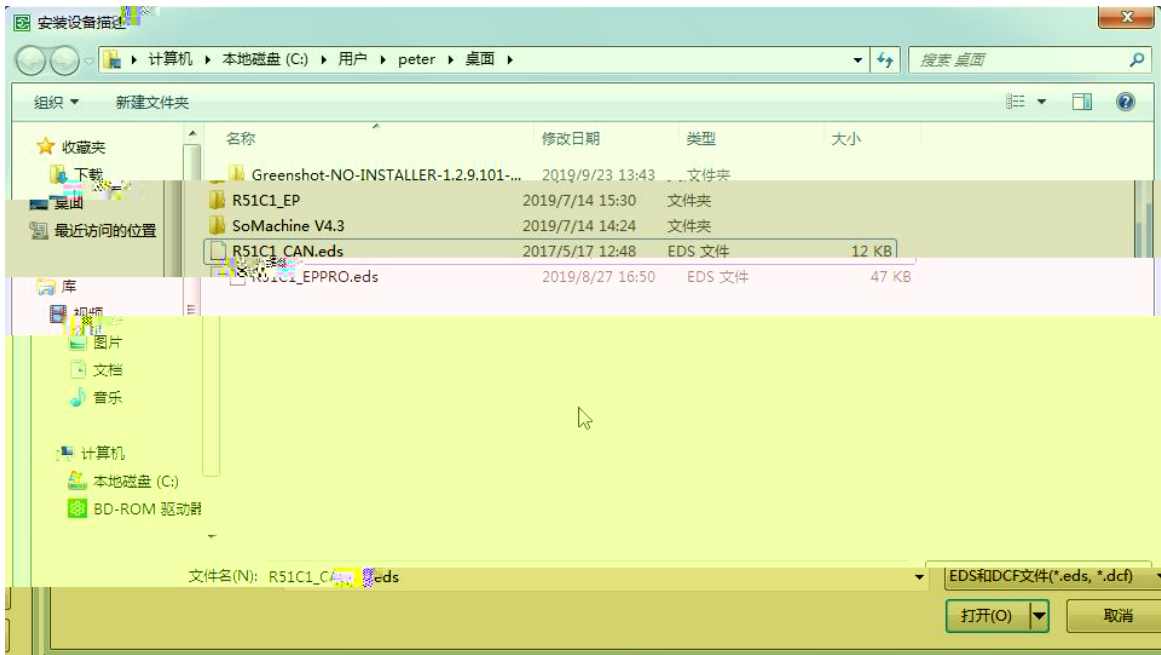
3.



4.



5. R51C1_EPPRO.eds



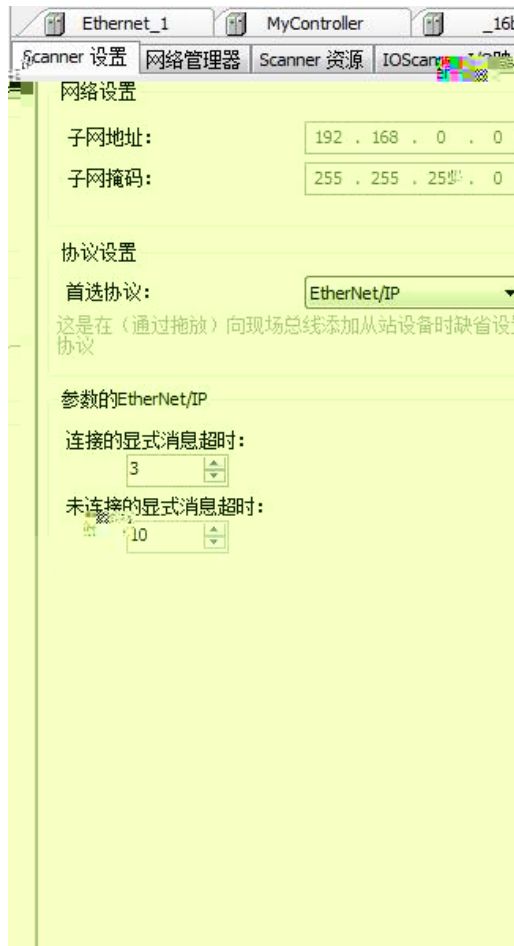
6. EDS



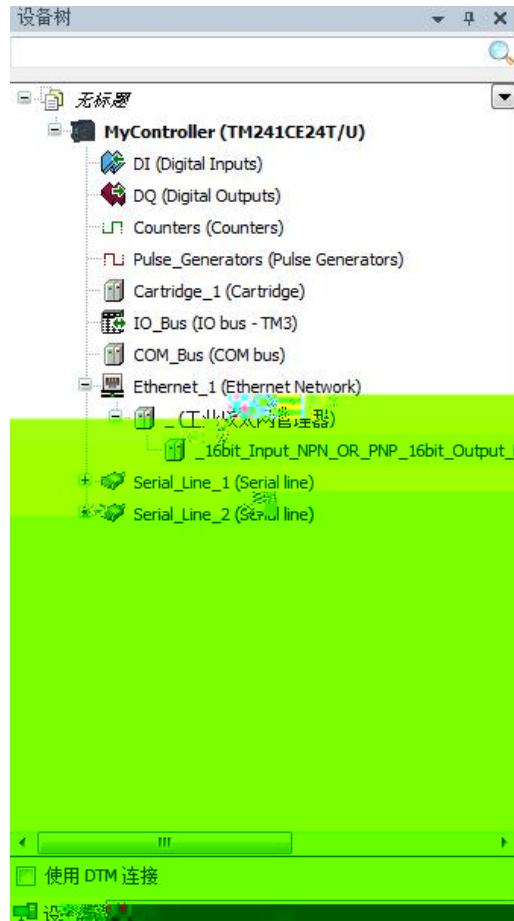
7. Ethernet

8. Ethernet/I

9. Ethernet/IP



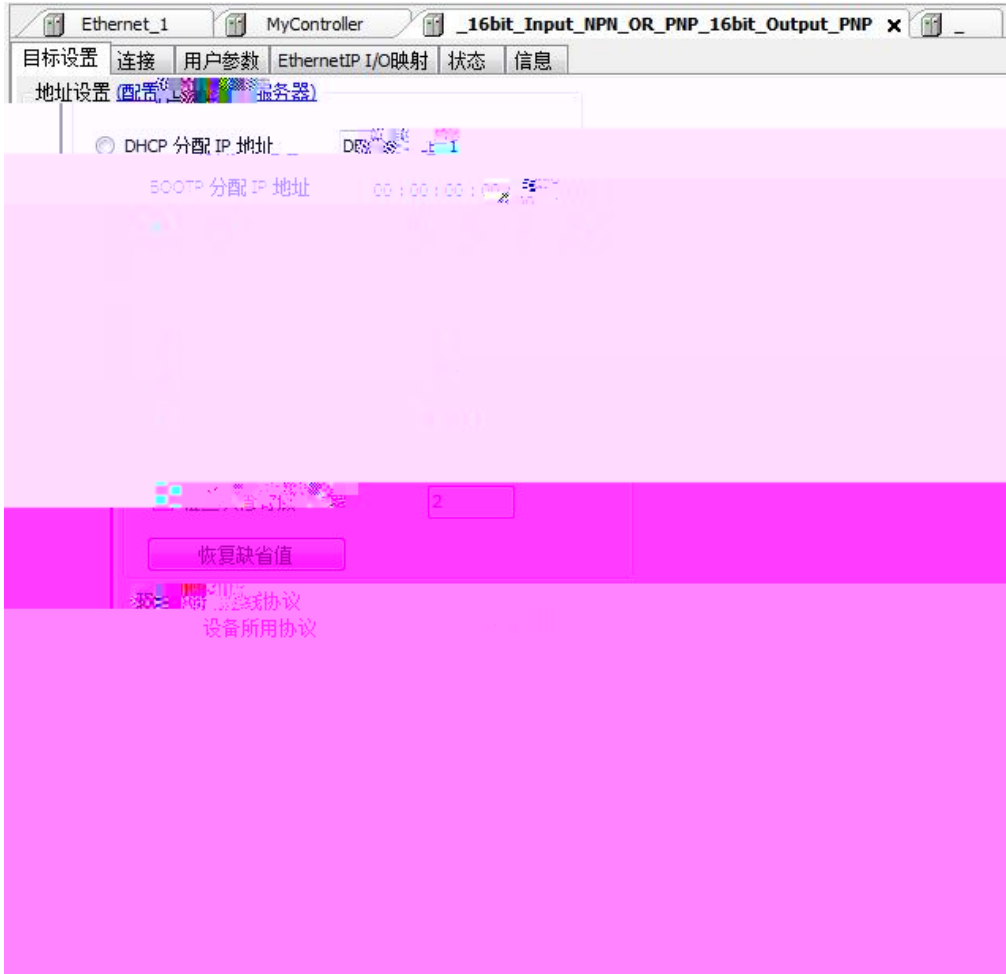
10. Ethernet/IP



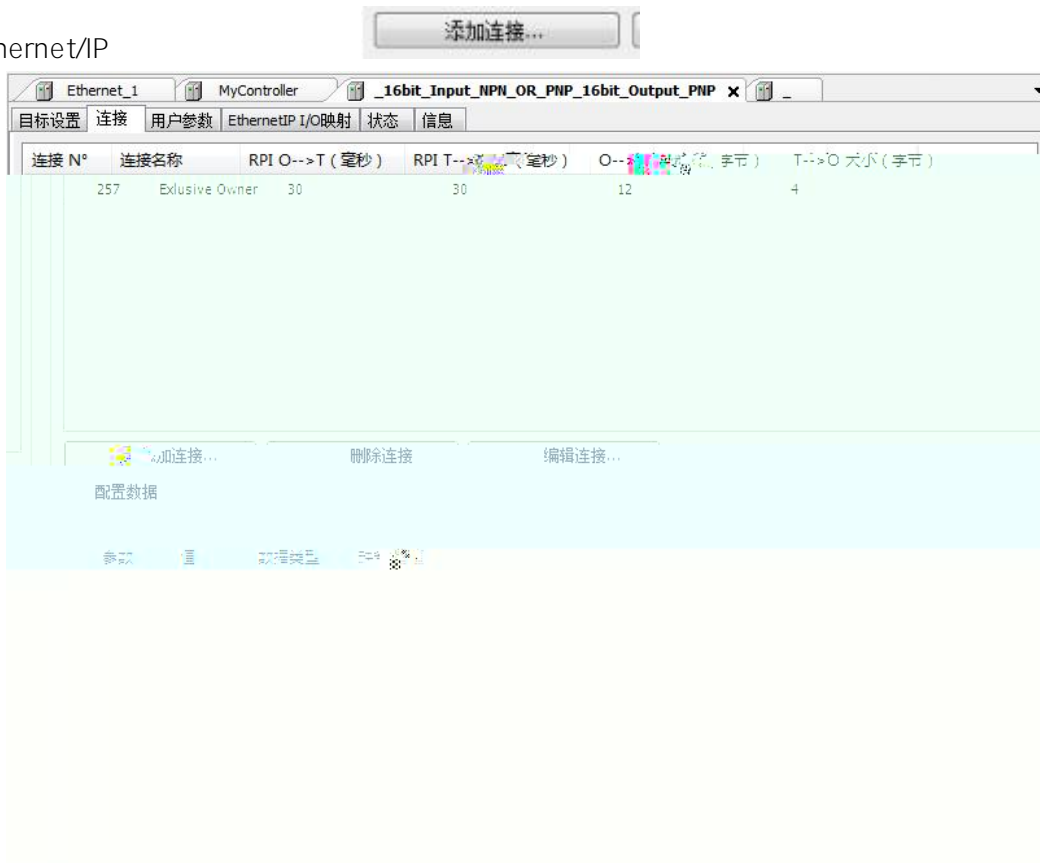
11. Ethernet/IP

11.1 Ethernet/IP

IP



11.2 Ethernet/IP



11.3 Ethernet/IP

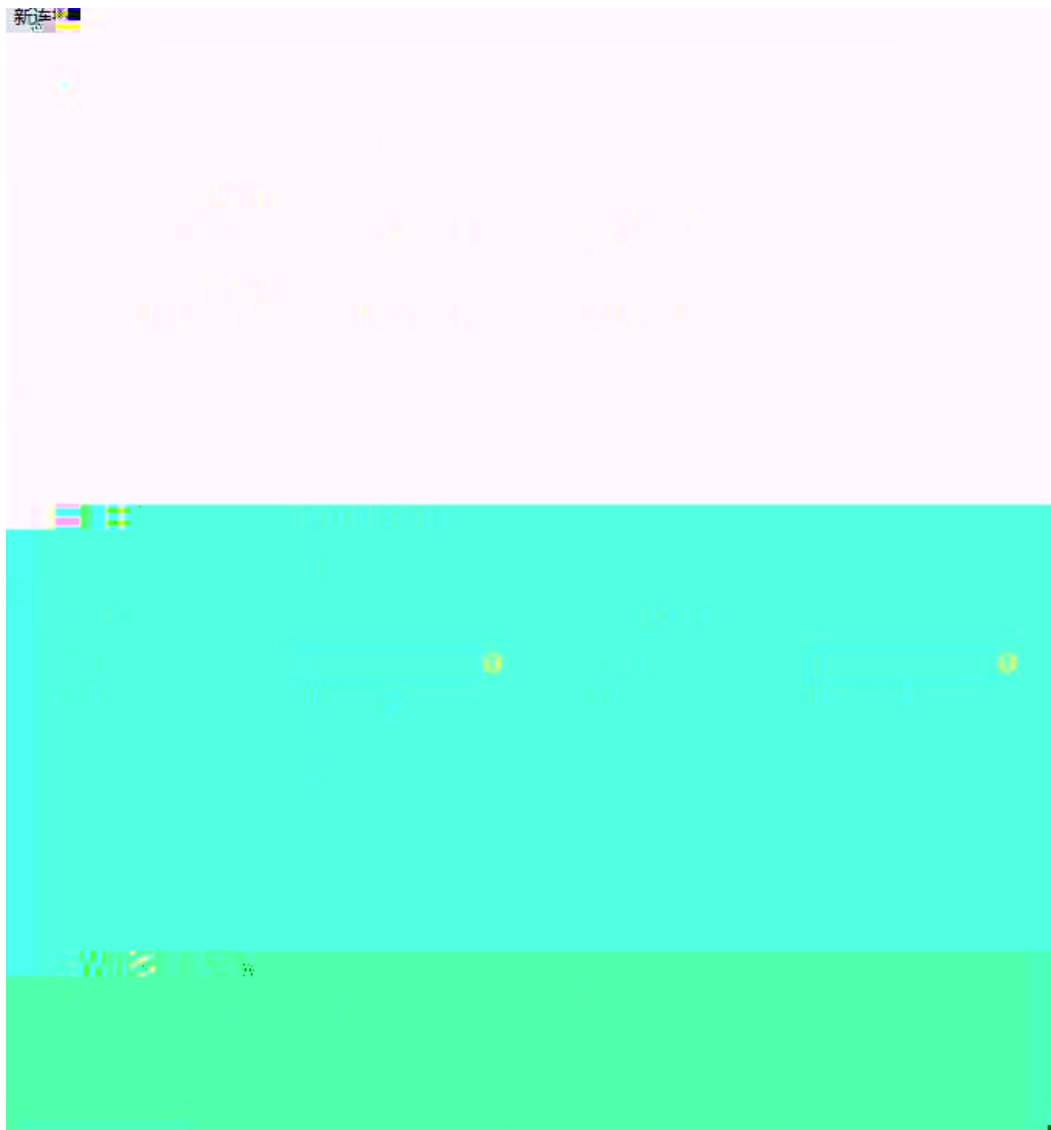
Scanner 至目标 (输出)

目标至 Scanner (输入)

O-->T

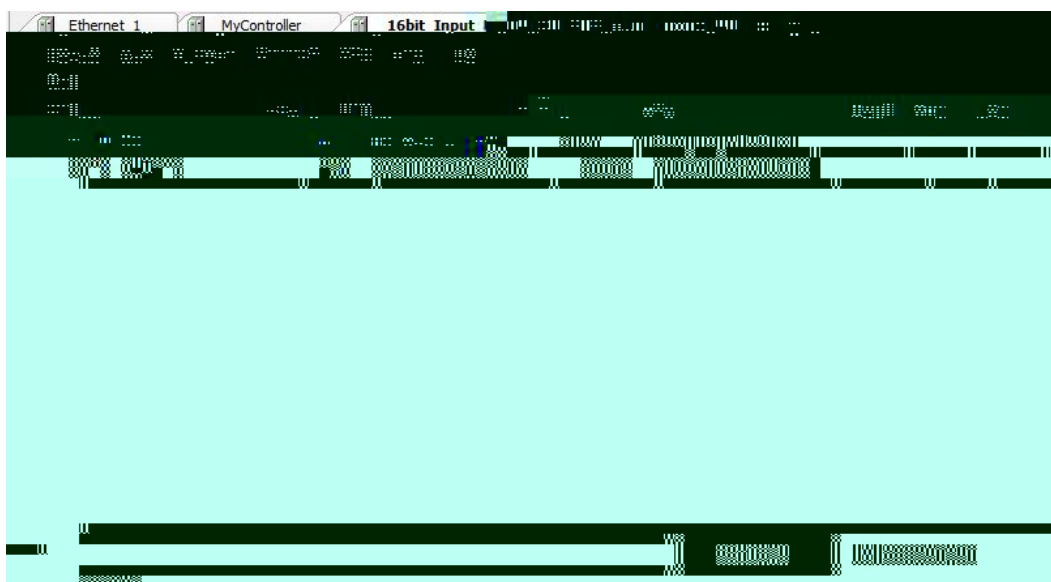
RxTool

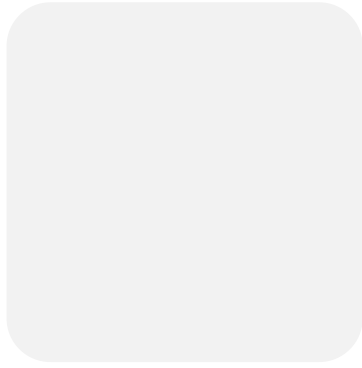
T-->O



11.4 Ethernet/IP IO

IO





来迎和平